

**“Beautifully positioned between the
Yorkshire Dales and Forest of Bowland”**

Welcome to the

SETTLE AREA

**A land of peaks, dales, caves and waterfalls with a
bustling, traditional market town at its heart**

AN ESSENTIAL GUIDE TO YOUR ENJOYMENT OF THE SETTLE AREA



**“a special place to make precious
memories with family and friends”**

www.visitsettle.co.uk



SETTLE TOURIST INFORMATION - 01729 825192
Published by Vibrant Settle Community Partnership



EXPLORE • DISCOVER • ENJOY

CONTENTS

The Settle Area	3
Map of the Settle Area	4 - 5
Map of Settle	6-7
Landscape	8-13
Heritage	14-19
Things to Do	17-26
Retail Therapy	27-43
Things to Do	49
Places to Eat & Sleep	43-56
Useful Information	57-60

Dacre, Son & Hartley

20 Yorkshire Offices

**Award-winning
Yorkshire estate agents**

Trusted for over 200 years



Pop in to see us at 3 High Street, Settle or
call: **01729 823921**
email: **settle@dacres.co.uk**

29

dacres.co.uk

EXPLORE • DISCOVER • ENJOY

THE SETTLE AREA

**“spectacular landscapes, a rich, fascinating
heritage, characterful villages and a bustling,
market town at it’s heart”**

The Settle Area is 185 square miles of spectacular landscapes and fascinating heritage that lie on the south-western edge of the Yorkshire Dales National Park and the north-eastern edge of the Forest of Bowland Area of Outstanding Natural Beauty.

The Area straddles the border between North Yorkshire and Lancashire and is just a short distance from Cumbria and the Lake District.

The ancient market town of Settle, with a Market Charter dating back to 1249, is the ‘capital’ of the area and home to many shops & services. The town is surrounded by characterful villages, each with their own distinctive personality and charm.

A number of the Yorkshire ‘dales’ lie within the area. Ribblesdale is the largest and Malhamdale, Chapel-le-Dale, Crummackdale, Clapdale and Silverdale are the smaller ones.

Lying within the area are the magnificent Three Peaks of Yorkshire (Whernside, Ingleborough & Pen-y-Ghent), the spectacular limestone landscape of Malham and the atmospheric Gisburn Forest and Stocks Reservoir.

A stretch of the Settle-Carlisle Railway lies within the area. This is one of England’s most scenic railways and at 78 miles long, is the longest conservation area in the country.



More information about the wonderful Settle Area can be found at

www.visitsettle.co.uk



SETTLE

PERFECTLY POSITIONED AT THE HEART
OF AWE-INSPIRING LANDSCAPES

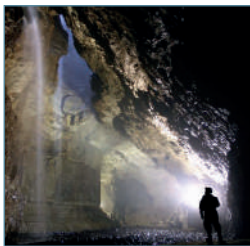


63

The Three Peakswww.visitsettle.co.uk/pen-y-ghent

The mountains of Whernside (736m/2,415ft), Ingleborough (723m/2,372ft) and Pen-y-ghent (694m/2,277ft) are collectively known as the (Yorkshire) Three Peaks. Although not the highest mountains in the country, these spectacular and distinctively shaped fells are undoubtedly impressive, towering as they do over the surrounding moors and countryside near Settle and Upper Ribblesdale. The Three Peaks are very popular with walkers, climbers and ramblers.

61

Gaping Gillwww.visitsettle.co.uk/gaping-gill

Gaping Gill is a famous pothole on the limestone moors flanking Ingleborough just above Clapdale and the village of Clapham in the "Three Peaks" area of the Yorkshire Dales. Situated at the bottom of a large crater, Gaping Gill is a yawning abyss which engulfs Fell Beck, the stream crashing down 365ft into a cathedral sized main chamber in what is probably Britain's highest unbroken waterfall.

66

Ingleborough Cavewww.ingleboroughcave.co.uk

Ingleborough Cave is the premier show cave in the Yorkshire Dales. For over 175 years it has entranced visitors with an awe inspiring range of stunning cave formations. The imposing cave entrance and the large passages are full of artefacts dating back millions of years.

The cave is reached from Clapham village via a 2km walk along the Ingleborough Estate Nature Trail. A minimum of 1hr should be allowed for the walk.

67

Ingleborough Estate Nature Trailwww.visitsettle.co.uk/ingleborough-estate-nature-trail

The Ingleborough Estate Nature Trail leads from an old sawmill, past a lake, and up a valley through woodland and wild flowers, into open space below Thwaite Scars, very close to Ingleborough Cave. Since the trail's creation in 1970, it has continued to mark the conservation of woodland and celebrates Reginald Farrer (1880-1920) who introduced many alpine species from China, Tibet and Upper Burma. The trail includes an amazing collection of rhododendrons.

EXPLORE • DISCOVER • ENJOY

LANDSCAPE

"Discover and enjoy the dramatic limestone scenery of the Dales and the deeply incised gritstone fells and wooded valleys of the Forest of Bowland"

To the north of Settle is the spectacular limestone scenery of Ribblesdale where the landscape is dominated by Yorkshire's famous Three Peaks; Pen-y-ghent, Ingleborough and Whernside. The area is famous for its many potholes and caves created by the eroding action of water on limestone.

The Dales were sculpted by glaciers during the last ice age so you can spot many glacial features. Look out for the Norber Erratics above Austwick, the Winskill Stones above Langcliffe, and Limestone Pavements above Feizor.

Waterfalls (or 'Forces' as they are known locally) are always magical places to discover and there are fabulous examples nearby; Stainforth Force, Catrigg Force and Scaleber Force. In Autumn you may see salmon jumping the falls at Stainforth!

A short distance to the east of Settle is Malhamdale where you can discover magnificent Malham Cove, a huge natural limestone cliff that was once the scene of a prehistoric waterfall, and Gordale Scar, a 400ft deep limestone gorge. Set high above Malham on Malham Moor is Malham Tarn, a large glacial lake owned by the National Trust and made famous as the setting for Charles Kingsley's classic children's novel, "The Water Babies".

To the west of Settle is the Forest of Bowland, an Area of Outstanding Natural Beauty. Gisburn Forest is criss-crossed with walking and cycling trails and makes a great day out. Stocks Reservoir, on the edge of Gisburn Forest, has 350 acres of open water surrounded by magnificent hills and moorland.

This Guide showcases some of the best landscape features to be found in the Settle area.

Find out more : www.visitsettle.co.uk

Malham Covewww.visitsettle.co.uk/malham-cove

89

Malham Cove is a huge natural limestone cliff and was once the scene of a spectacular prehistoric waterfall. At the top of the cove is a fine limestone pavement which provides a fine viewpoint over Malham and Malhamdale. The cove itself is popular with rock climbers, and also peregrine falcons which have returned in recent years to nest on ledges on the otherwise sheer cliff face.

**Malham Tarn**www.visitsettle.co.uk/malham-tarn

87

Set high above Malham on Malham Moor, Malham Tarn is a large lake formed by glaciation in the last ice age, made famous as the setting for Charles Kingsley's classic children's novel, "The Water Babies". Today, despite its wild location, Malham Tarn attracts many visitors to its nature reserve, where a pleasant walk leads along the shoreline to Tarn House, a remote country house which now houses a residential environmental field studies centre.

**Gordale Scar**www.visitsettle.co.uk/gordale-scar

88

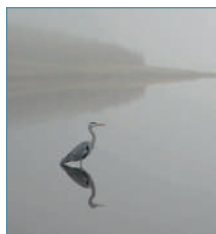
A great limestone gorge near Malham. Some 400 feet deep, Gordale Scar is believed to be the remains of a huge underground cavern whose roof collapsed around the time of the last ice age. Gordale Beck cascades down the gorge in three separate waterfalls.

A short scramble takes visitors up the smooth limestone deposits at the lower waterfalls into the top section of the gorge, where a route leads out in to the upper part of Gordale and on towards Malham Tarn.

**Gisburn Forest & Stocks Reservoir**www.visitsettle.co.uk/gisburn-forest

97

Located in the North East corner of Lancashire and within the Forest of Bowland Area of Outstanding Natural Beauty. All year round, Gisburn Forest offers different experiences for different people. Explore on foot, on horseback or by bike. Find popular trails and quiet glades. Stocks Reservoir is the largest fly fishery in the North West of England. Situated at the head of the Hodder Valley, Stocks has a wild and unspoiled quality - the perfect place for a days fly fishing.

**Attermire Scar**www.visitsettle.co.uk/attermire-scar.html

85

Attermire Scar is an impressive limestone scar, over a mile in length, situated high above Settle and the small side valley of Stockdale. Together with nearby Warrendale Knotts, Attermire Scar forms part of a limestone wonderland that is a joy to explore again and again. The gleaming white limestone contrasts beautifully with the surrounding green grass.

Grid Reference: SD 830 634

**Norber Erratics**www.visitsettle.co.uk/norber-erratics.html

69

The Norber erratics are one of the finest groups of glacial erratic boulders in Britain. They are found on the southern slopes of Ingleborough, close to the village of Austwick. Many of the boulders are perched on pedestals of limestone up to 30cm high. The boulders were probably deposited by melting ice sheets at the end of the last ice age, around 12,000 years ago.

Grid Reference: SD 764 698.

**Winskill Stones**www.visitsettle.co.uk/winskill-stones.html

78

Winskill Stones is a stunningly beautiful nature reserve above the villages of Langcliffe and Stainforth. As well as small patches of limestone pavement, this reserve supports a large area of limestone pasture. In spring, cowslip and early-purple orchid flower here. A little later, the mainly yellow flowers of mountain pansy become common.

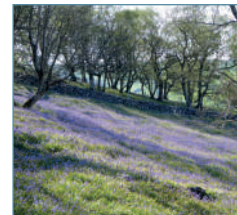
Grid Reference: SD 834 664

**Oxenber & Wharfe Woods**www.visitsettle.co.uk/oxenber-and-wharfe-woods.html

70

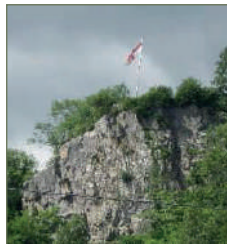
In spring Oxenber & Wharfe Woods are a glorious tapestry of bluebells and other woodland flowers. Hundreds of years ago, this area of woodland and pasture was part of Austwick village quarry. Access paths have been laid out through the woods and map boards at each of the entrances help you find your way.

Grid Reference: SD 789 683



Castleberg Rockwww.visitsettle.co.uk/castleberg-rock.html

41



Castleberg, the tall limestone rock that towers over Settle, has been a beauty spot for centuries, ever since travellers started touring Britain's natural wonders. In the 1700s a huge sundial was laid out on the hillside and in the 1800s it was a very popular pleasure ground with amusements such as swings, a roundabout and roller skating. Today the site is managed as a haven for wildlife. There is a steep stony path to the summit from which there are spectacular views.

Settle Riverside Walkwww.visitsettle.co.uk/settle-riverside-walk.html

44

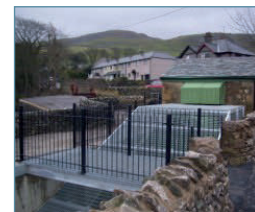


Explore the lovely River Ribble on the Riverside Walk. Suitable for wheelchairs, pushchairs and cycles, and within easy reach of the town centre.

Stroll past old cotton and snuff mills which were so important in years gone by and wonder at the award-winning Settle Hydro which once again harnesses the river to create clean, green electricity for local homes.

Settle Hydro, Weir and Salmon Ladderwww.settlehydro.org.uk

49



Multi award-winning Settle Hydro uses an Archimedean screw to generate 'green' electricity from the River Ribble as it flows over the adjacent weir.

The hydro scheme has been built into the mill race which for hundreds of years fed water to the water wheel which powered the machinery at Bridge End Mill. You can also observe the fish pass which allows migrating salmon and sea trout to pass the weir on their way to spawning beds

Victoria Cavewww.visitsettle.co.uk/victoriacave.html

85



Victoria Cave is a designated scheduled monument located on high limestone ground about 1.5 miles north east of Settle.

The cave is an extraordinary place with a fascinating history and a unique record of climate change going back hundreds of thousands of years.

Scaleber Force (Waterfall)www.visitsettle.co.uk/scaleber-force.html

86



Scaleber Force is a stunning 40ft waterfall whose crystal clear waters tumble over limestone cliffs before plunging into a deep pool.

The waterfall is readily accessible from the road between Settle and Airedale.

Catrigg Force (Waterfall)www.visitsettle.co.uk/catrigg-force.html

77



Catrigg Force is an absolute gem. The waterfall is hidden from view in a small secluded copse one mile upstream of Stainforth village. The main waterfall has a vertical drop of about 6 metres into a lovely step pool.

This secluded spot was one of Elgar's favourite places and he drew inspiration from the Yorkshire Dales to compose his most famous works - the Enigma Variations and Pomp and Circumstance.

Stainforth Force (Waterfall)www.visitsettle.co.uk/stainforth-force.html

76



At Stainforth Force, just west of Stainforth village, the River Ribble tumbles over a series of cascades where salmon can often be seen leaping on their final journey up river to their spawning grounds.

Just above Stainforth Force, a former monastic road crosses the Ribble on a Pack Horse Bridge that was built in 1675 and is now owned by the National Trust.

Long Preston Floodplain Projectwww.visitsettle.co.uk/long-preston-flood-plain

94



The Long Preston Floodplain Project was launched in 2004 with the aim of improving the wildlife value of the Ribble flood plain between Settle, Long Preston and Wigglesworth. The project area covers 1890 acres and is home to many specialist species of flora and wading birds.

There are two walks in the area and six interpretation boards at locations bordering the project site.

Settle - Carlisle Railwaywww.visitsettle.co.uk/settle-carlisle-railway

31

The 72 mile route from Settle to Carlisle takes you on a journey through the magnificent Yorkshire Dales, over the 24 arches of the Ribbleshead Viaduct before plunging in to the longest tunnel on the line at Blea Moor. Emerging onto the side of Dentdale, the line leaves the Dales at Garsdale and makes it way through the gentle, lush rolling hills of the Eden Valley, with rural villages and market towns before arriving at the great border city of Carlisle.

**Settle Station Water Tower**www.visitsettle.co.uk/settle-staion-water-tower

34

Settle Station Water Tower was one of eight watering places for steam locomotives on the Settle-Carlisle railway but is the only survivor. During 2011 it was restored and adapted to be a private house, retaining all of its original features. The work was televised for Channel 4's Restoration Man series. Various relics from the railway can be seen in the grounds of the Water Tower including a Navvy Hut that was built to house workers when the line was built and now used as a garage.

**Settle Station Signal Box**www.visitsettle.co.uk/settle-station-signal-box

32

Settle Station Signal Box was opened in 1891 and remained in operation until 1984.

The refurbished Signal Box has been re-opened as a visitor centre to show what operating a traditional signal box would be like.

The signal box is open every Saturday and at other times by appointment.

**Ribbleshead Viaduct**www.visitsettle.co.uk/ribbleshead-viaduct

61

The famous Ribbleshead Viaduct has twenty-four magnificent arches spanning the floor of the Pennines. The viaduct represents a short stretch of the beautiful 72 mile long Settle to Carlisle railway. Built between 1870 and 1875, the viaduct runs for some 440 yards above the valley floor. This is probably one of the most famous railway bridges in the UK, if not the world.



EXPLORE • DISCOVER • ENJOY

HERITAGE

“With a wealth of impressive Listed Buildings, Scheduled Ancient Monuments and Conservation Areas, the Settle area has an incredibly rich heritage, history and culture.”

Start your exploration of the heritage and culture of Settle and the surrounding area at The Folly, a 17th Century Grade I listed Town House that houses a Coffee House and Museum.

Uphill from The Folly explore the narrow streets of the oldest parts of the town where many intriguing architectural features can be spied.

The market place is surrounded by a variety of glorious buildings, most notably the Shambles (1675) and the Town Hall (1832) now housing a great selection of shops, galleries and places to eat.

The Victoria Hall opened as a music hall in 1853 and still has regular shows making it the oldest continuously operating music hall in the country. Take a peek at the fire curtain on which has been painted a picture of Settle Market Place in the 1700s.

Take the Riverside Walk and spot the three former mills (now converted to other uses!) that are an important part of Settle's industrial heritage.

The iconic Settle-Carlisle Railway is a heritage treasure trove. Visit Settle Station with its working Signal Box and Water Tower that has been restored and converted into a quirky home or travel along Ribblesdale to the Viaduct and Visitor Centre at Ribbleshead set amidst the wonderful 3 Peaks landscape.

Don't miss the breathtaking Hoffman Kiln (1873), a scheduled Ancient Monument and a remnant of the once important lime making industry. It's just off the B6479 between Langcliffe and Stainforth and next to the Settle-Carlisle railway.

This Guide showcases some of the most interesting heritage buildings in the Settle area. Find out more :

www.visitsettle.co.uk

81

Giggleswick School Chapelwww.visitsettle.co.uk/giggleswick-school-chapel

An impressive landmark, Giggleswick School Chapel with its distinctive copper dome dominates the surrounding countryside. The chapel, built to commemorate the Diamond Jubilee of Queen Victoria, was a gift to the school from Walter Morrison of Malham. It took 4 years to build and was opened in 1901. Visitors are welcome to visit the Chapel, by prior arrangement, from Mon to Fri 9am to 5pm.

11

The Shambleswww.visitsettle.co.uk/shambles.html

The Shambles in Settle Market Place was built in the 1670's and was where Settle butchers once plied their trade.

It takes the form of a row of shops with cottages above and basements underneath, fronted by a dual row of six arches.

12

Settle Town Hallwww.visitsettle.co.uk/townhall.html

The imposing Town Hall in Settle Market Place was opened in 1832 and housed the library of Settle Literary Society, a savings bank and newsroom as well as space for public lectures.

Today, the Town Hall is home to the Tourist Information Centre and a variety of shops, galleries and businesses.

79

Craven Lime Works and Hoffman Kilnwww.visitsettle.co.uk/craven-lime-works.html

A marvellous relic of an industrial past (and a scheduled Ancient monument), the Craven Lime Works and Hoffman Kiln at Langcliffe was operational from 1873 to 1931. The Hoffman Kiln, the largest of its type in the world, converted local limestone into lime - a valuable product with many uses in industry and agriculture.

The site is managed by the National Park Authority and there is a free car park, walking trail and interpretation boards.

EXPLORE • DISCOVER • ENJOY

THINGS TO DO & 'SPECIAL EXPERIENCES'

"There is a huge variety of things to explore, discover and enjoy in the Settle Area whether you are visiting for a day, a short break or a longer holiday"

During the day

The Settle area is prime country for walking, cycling and mountain biking, all of which are wonderful ways of exploring the local countryside. Discover hidden places using the many routes and trails that criss-cross the area. Take a gentle stroll along the banks of the River Ribble or the challenge of the 24 mile Three Peaks walk.

If you are looking for a 'special experience' hosted by local experts then choose from 'Outdoor Adventures' with Yorkshire Dales Guides, 'Cheese Making' with The Courtyard Dairy, 'Birds of Prey' with Settle Falconry, 'Graveyard Tours' with Sarah Lister and 'Butchery Courses' with Town End Farm Shop.

Less strenuous pursuits include exploring and browsing the delightful shops, galleries, museums and eateries in Settle and the surrounding villages. A ride on the famous Settle-Carlisle line is a 'must do' and a great way of viewing the lovely Dales scenery.

Throughout the year, a number of festivals, shows, street markets and galas are held. Visit our website for dates and details.

During the evening

After an early supper at a local restaurant you can visit one of the two excellent theatres in the area; Victoria Hall in Settle and The Richard Whiteley Theatre in Giggleswick. Both venues have full programmes of music, dance, drama, comedy and film. Check their websites for upcoming events.

A wide variety of events are held throughout the year in local inns, cafes, churches, village halls and museum. Check out the various notice boards or ask at the TIC to find out what is going on.

Further details of local events and happenings can be found at

**www.visitsettle.co.uk
and www.facebook.com/VisitSettle**



Settle's thriving Victorian Music Hall celebrates 170 years in 2023.

MISS VICTORIA'S REFRESHMENT GARDENS

Our dog-friendly, family-friendly outdoor cafe and performance space opens May-September 2023



See what's on

www.settlevictoriahall.org.uk - 01729 825718

MUSIC - FILM - THEATRE - COMMUNITY



40



THE FOLLY
MUSEUM OF NORTH CRAVEN LIFE

Discover a hidden gem of the Yorkshire Dales

Find us on Victoria Street in Settle

Settle's 17th century townhouse and only Grade I listed building

Free Entry for 2023

www.thefolly.org.uk
01729 825185
REGISTERED CHARITY NO. 505438



82

Bringing ground-breaking and award-winning theatre to the heart of the Yorkshire Dales

Visit our website for the latest theatre, film and music listings.
giggleswick.org.uk/rwt
01729 893180

Richard Whiteley Theatre
Giggleswick School,
Settle, BD24 0DE

richard whiteley theatre.

The Richard Whiteley Theatre is part of Giggleswick School.
Reg Charity No. 1109826

Curious Tales from the Graveyard

Light-hearted celebrations of real characters from the past in trails around local graveyards

A different theme each week throughout the Summer Holidays



Fun and Interactive
Suitable for the whole family

'I never knew a graveyard could be so entertaining - it's like 'Who Do You Think You Are' with a sprinkling of 'Horrible Histories' - brilliant!'

See www.visitsettle.co.uk/graveyard-tours for more information



SETTLE FALCONRY 71

Hands-on Birds of Prey Experience, based from Elaine's Tearoom...the perfect gift!
Based at Feizor, 4 miles from the market town of Settle.



Call: 01729 268576
GIFT VOUCHERS AVAILABLE DIRECT FROM
WWW.SETTLEFALCONRY.CO.UK
*Pre booking essential
We look forward to having a great day with you!



FRIENDS OF THE SETTLE-CARLISLE LINE

Join us and help support
and promote one of
England's most scenic railways!
Receive four magazines a
year packed with news
and articles about everything
Settle-Carlisle!

Visit our website to join
Annual Subscriptions from £10.00
www.foscl.org.uk

34

SPECIAL EXPERIENCES

with Award-Winning Food Businesses

Cheese Making and Tasting
at The Courtyard Dairy



Butchery, Salumi & Charcuterie
at Town Head Farm Shop



MORE SPECIAL EXPERIENCES

www.visitsettle.co.uk/unforgettable-experiences

48



SETTLE AREA
SWIMMING POOL
More than just a Pool



**THERE IS SOMETHING FOR
EVERYONE AT SETTLE POOL**



In addition to our 20 metre three lane pool we also have
fitSpace, a multi-use dry area that can be used
for everything from spin classes to children's parties.
And we have a café too!

Visitors Welcome - No Membership Needed

www.settleswimmingpool.co.uk 01729 823626

EXPLORE • DISCOVER • ENJOY

OUTDOOR ACTIVITIES



WALKING

The Settle Area has a vast network of public footpaths and bridleways that enable you to get 'up-close and personal' with some of the most spectacular landscape in the country.

Whether it's a gentle ramble along the banks of a Dales river, a challenging hike to the summit of one of Yorkshire's highest peaks, or something in-between, you're guaranteed to find a walk to perfectly match your requirements.

CYCLING & MOUNTAIN BIKING

Cycling is a great way of exploring the wonderful countryside and there is a wide and diverse selection of both on- and off-road routes for you to explore. Try the 10 mile Settle Loop (part of the Pennine Bridleway), the '8' in Gisburn Forest (so called because it's laid out in a figure of eight!) or the challenging 36 mile route around Pen-y-ghent.

WILD SWIMMING

The rivers, becks, waterfalls and pools within the Settle Area provide some great opportunities for wild swimming. The best known spots are the Eel Pool at Stainforth Force and Janet's Foss.

Visit our website for further details www.visitsettle.co.uk

ADVENTUROUS ACTIVITIES & BESPOKE TRAINING BASED IN SETTLE

Yorkshire Dales Guides

THE ADVENTURE SPECIALISTS

CAVING POTHOLING CLIMBING GHYLL SCRAMBLING

ORIENTEERING 'RESCUE' THEMED TEAM BUILDING HIKING

5* SERVICE

W: WWW.YORKSHIREDALESGUIDES.CO.UK E: INFO@YORKSHIREDALESGUIDES.CO.UK T: +44 (0)1729 824455

CAVING & POTHOLING

Beneath the Settle Area are some of the finest and most spectacular cave systems in the UK. Victoria Cave, Jubilee Cave, Gaping Gill, Grey Wife Hole, Quaking Pot, Sunset Hole, & Hurtle Pot are the intriguing names of just a few.

ROCK CLIMBING

With over 50 limestone crags and more than 1900 climbs, the Settle Area offers some fabulous rock climbing challenges for all levels of capability.

Crags include Castleberg (overlooking Settle), Malham Cove, Trow Gill and Giggleswick Scar.



Caving, Potholing and Rock Climbing are extremely dangerous for all but the well-equipped and experienced. If you decide you'd like to try these activities, we strongly recommend you hire expert instructors such as The Yorkshire Dales Guides.

EXPLORE • DISCOVER • ENJOY A HAVEN OF TRANQUILITY

“Much of the Settle Area is a haven of tranquility where you can escape the hurly-burly of modern life, totally relax, chill-out and reconnect with nature”

OK, there are a few really popular ‘honeypots’ which attract crowds of visitors but these are easily avoided if it’s peace and tranquillity that you’re looking for.

You don’t have to go far off the beaten track to find wonderful, quiet, lonely places where the only sounds are those of nature and the countryside.

Sounds such as the splashing of a waterfall, the tinkling of a beck, the bubbling call of the curlew, the bleating of a flock of sheep, a distant farmer working in his fields, the rustling of leaves in the trees . . .

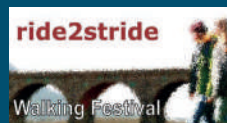


Turning to nature can bring instant relief from the hustle and bustle of daily life. It can help still the mind, add perspective and convey a sense of wonder.

Further details can be found at
www.visitsettle.co.uk

FESTIVALS, SHOWS, EVENTS AND GATHERINGS

Please check dates on **www.visitsettle.co.uk**



Ride2Stride

Settle-Carlisle Walking & Music Festival

Late April - Early May

www.ride2stride.co.uk



Summer Saunter

Walking & Running Event

Early July

www.visitsettle.co.uk



Austwick Cuckoo Festival & Street Market

Spring Bank Holiday Monday

www.visitsettle.co.uk



Settle Down Fest

A weekend of folk-punk excellence

June - July

www.victoriahall.org.uk



Settle Flowerpot Festival

Mid July - Early Sept

www.settleflowerpotfestival.co.uk



Malham Show

August Bank Holiday Saturday

www.malhamshow.co.uk



Settle Christmas Lights Switch-On

Last Saturday in November

www.visitsettle.co.uk

FREE SUMMER FUN EVERY DAY MID JULY - EARLY SEPT

SETTLE FlowerPot Festival



**Great FUN for all the family
Guaranteed to make you smile!**

www.settleflowerpotfestival.co.uk



f @settleflowerpotfestival
SAT NAV BD24 9JD



EXPLORE • DISCOVER • ENJOY

RETAIL THERAPY

“Shopping in Settle is like travelling back in time to before the emergence of the chain stores that now dominate most High Streets and make it almost impossible to distinguish one town centre from another”

The vast majority of Settle shops are independently owned by people who live in the local area. Their shops inhabit buildings which have been occupied over the years by many generations of shop owners whose goods and services reflected the particular needs and aspirations of their era.

The beauty of visiting an independent shop is that you are guaranteed to be served by someone with a real passion for their products and a helpful expertise that will guide you towards making the right purchase. A friendly face and excellent customer service are a hallmark of the Settle shopping experience.

The shopping area is centred around the historic market place, that was granted a Market Charter in 1248 by Henry III and is overlooked by the majestic Castleberg Crag that towers over the town. The shopping area extends along Duke Street, Church Street, Cheapside, High Street, Chapel Street, Kirkgate, Station Road, Commercial Courtyard and Bishopdale Court. This central area is very compact and the avid shopper will undoubtedly be rewarded by exploring all the twists and turns, ginnels and courtyards.

There are three car parks that service the town centre, all reasonably priced and located very close to the shops.

An enjoyable shopping experience isn't restricted to Settle Town Centre. We recommend you seek out Lay of the Land Garden Centre and Café on Kings Mill Lane, The Courtyard Dairy on the A65 between Settle & Austwick, Watershed Mill on the road between Settle & Langcliffe and Town Head Farm Shop at Airton in Malhamdale

This Guide showcases the best shops to be found in the Settle area.
Further details can be found at :-

www.visitsettle.co.uk.

The House that Jack Built

Settle's award winning toy & gift shop!

Find quality toys, gifts for all ages, traditional games, art and craft materials, fancy dress, nursery gifts, organic clothing and much more.



Duke Street, Settle,
North Yorkshire, BD24 9DW
thehousethatjackbuiltltd.co.uk

22

Limestone Books

12

An Independent Bookshop

OPEN TUESDAY TO SATURDAY

*Hand-picked selection of
Contemporary Fiction*

Non-Fiction

Greetings Cards

Maps

Local History



THE SHAMBLES MARKET SQUARE
SETTLE BD24 9EH

01729 268180 tanya@limestonebooks.co.uk
www.limestonebooks.co.uk

Cottontail Crafts

Established 1956

36



A Paradise
for Crafters & Knitters

Expert Advice & Personal Service
from Sue Amphlett

Knitting Needlecraft Sewing
Felting Haberdashery Fabrics
Gifts Kid's Crafts Books
100% British Wool



www.cottontailcrafts.co.uk

16 Duke Street

Settle BD24 9DN

01729 822946



Gladrags

18

by Deb & Gill

**Modern ladies clothing
agency packed with 'nearly
new' items for all ages**

Including bags, shoes, fascinators
and other accessories

Dry cleaning service available

7 Chapel Street, Settle,
BD24 9HS

01729 825911



Find us on Facebook!

iPrint SHOP

hello@iprintshop.co.uk

20 STATION ROAD • SETTLE

www.iprintshop.co.uk

From **DESIGN** to **PRINT** AND EVERYTHING
IN-BETWEEN!



TEL: 01729 823990

28

Ahernes

12

98

Independent fashion retailer

www.ahernesuk.com



ROBELL

01729 850201

Home of Distinctive Men's fashion brands Barbour, Magee, Baileys Giordano. Shirts

Specialist in, Masai Clothing, Robell Trousers, Soya Concept, Just White, Olsen

We're a lot closer than you think

The Green Hellfield, Skipton North Yorkshire BD23 4JZ

Free parking at our Hellfield store

Also Town Hall Market Place, Settle, North Yorkshire, BD24 9EJ

32



DALESBRED

INTERIOR DESIGN • SOFT FURNISHINGS • SOFAS
REUPHOLSTERY & INTERIOR ACCESSORIES



VISIT OUR SHOWROOM

Whatever your design taste or budget, our friendly and experienced team at Dalesbred can help you achieve your ideal home

The Sidings Cammock Lane Settle BD24 9RP
dalesbred.co.uk 07923 447 672 info@dalesbred.co.uk

20

Peter Allen

FLOOR COVERINGS LTD



01729 825122 PETER ALLEN HOME INTERIORS



HOME INTERIOR & GIFTS

7 Duke Street Settle BD24 9AG

BESPOKE FURNITURE

RUGS, BLINDS & CURTAINS

BEDS & MATTRESSES

BEAUTIFUL GIFTS

FOR ALL YOUR FLOORING NEEDS VISIT OUR SECOND STORE AT

Unit 2 New Road Sowarth Field Ind Est. Settle BD24 9AG

info@peterallenflooring.co.uk

21

Seddon and Davison

Home and Lifestyle




Visit us at 11 Duke Street
Settle, BD24 9DU
01729 824550



www.seddonanddavison.com

COLLECTABLES • CURIOS • CREATIONS



TEATIME VINTAGE

COLLECTABLES • CURIOS • CREATIONS
ANTIQUES • VINTAGE

also FRESH FLOWERS & PLANTS

Home to a Range of Dealers
all under one roof

8 Duke Street Settle BD24 9DP **26**
01729 823494 07534 302 135
teatimevintage14@gmail.com www.teatimevintage.co.uk

  FIND US ON SOCIAL MEDIA  
teatimevintage16

DRAKE & MACEFIELD

FAMILY BUTCHERS
SINCE 1898

MARKET PLACE
SETTLE
01729 822393



11 OTLEY STREET
SKIPTON
01756 792802 **15**

BEEF AND LAMB SUPPLIED BY JOHN SPENSLEY AT THORLBY
FREE RANGE PORK FROM ANNA'S HAPPY TROTTERS
MANY VARIETIES OF AWARD WINNING PIES, SAUSAGE AND READY TO COOK MEALS
OUR AWARD WINNING DRY CURED BACON & GAMMON AND BLACK PUDDING

www.drakeandmacefield.co.uk



**COLLECTABLES
GIFTS BYGONES
GARDENALIA
INTERIORS**

Market Place Settle BD24 9EF **9**
07817 173689 / 07968 179150 harrisrc2k@aol.com

CASTLEBERG OUTDOORS

19 gear for adventure

... a massive range of
high quality outdoor
clothing and
equipment.



Visit us in store or
order online ...
www.castlebergoutdoors.co.uk

Cheapside, Settle, North Yorkshire,
BD24 9EW. Tel 01729 823751

Studio Vault
www.studiovault.co.uk



12

01729 268150
Town Hall Basement

Jewellery Studio of Emily Knight
and Contemporary Craft Gallery

LAMBERTS NEWS

News & **MORE** delivered to your door

19

CHEAPSIDE

SETTLE BD24 9EW

01729 823580

STOCKISTS OF:
Newspapers & Magazines
Greeting Cards, Stationery
Toys & Games
Household Products



SETTLE MARKET

Traditional Outdoor Market
held on the Market Square every Tuesday

Royal Charter Granted in 1249

Variety of Stalls including

Fruit & Vegetables ▪ Babywear

Fish ▪ Ladies Fashion ▪ Eggs & Honey

Frames ▪ Bread ▪ Gardening Products

Cheese ▪ Jewellery ▪ Books & Jigsaws

Vinyls & CD's

and much, much more!!

Welcoming and Friendly Market

Long-standing Traders




Settle
TOWN COUNCIL

Settle Town Council. Town Hall,
Market Place, Settle. BD24 9EJ
Phone: 01729 823617
Email: clerk@settle-town-council.gov.uk

WARREN & WRIGHT
JEWELLERS



26



Stockists of:-

Quality Diamond Rings

Second Hand Jewellery

Sekonda & Royal London

Ladies & Gents Watches

Modern & Contemporary Silver Jewellery

Beswick Figurines

Jewellery Repairs & Remounts

and Much, Much More

www.warrenandwright.co.uk

12 Duke Street, Settle, North Yorkshire

Tel: 01729 824165



Friends of the Settle - Carlisle Line Settle Station Shop

Maps ▫ Local Walking Guides ▫ Cards ▫ Gifts
Souvenirs ▫ Railway Books (new & second-hand)
Hot & Cold Drinks ▫ Ice creams ▫ Confectionery
Open most days 10.00am - 4.00pm

Our shop is run solely by volunteers so if you fancy helping us out
ring 0786 085 5689 or email: volunteers@settlecarlisle.com

34

Settle Station Station Road Settle BD24 9AA

Trevor's Market Shop

Market Prices Every Day

Biscuits, Sweets, Chocolates
Groceries, Cleaning Products

18 4 High Street SETTLE BD24 9EX



SETTLE DIY

at ASHFIELD

27



Paint - Colour Mixing - Wallpaper
Key Cutting - Locks
Timber - Woodcare Products
Plumbing - Gardening - Hardware
Bulbs - Electrical - Power Tools
And Much More Call in and See

Open Mon to Fri 8.30am - 5.30pm Sat 9.00am - 5.30pm
Ashfield Car Park Settle BD24 9AA Tel: 01729 823002

www.settlediy.com



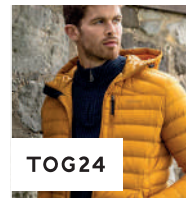
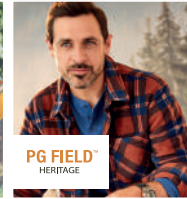
50

WATERSHED MILL

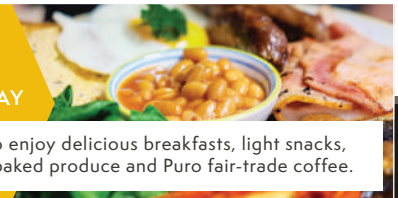
SHOPPING & COFFEE SHOP

Discover designer brands
and delicious food in Settle,
North Yorkshire

- OUR BRANDS INCLUDE -



Visit our
Restaurant
OPEN EVERYDAY



Drop by anytime to enjoy delicious breakfasts, light snacks,
main meals, fresh baked produce and Puro fair-trade coffee.

Langcliffe Road, Settle, N. Yorkshire, BD24 9LRT

28



Andrew Mounsey

◆ Floor Coverings ◆

For all your Domestic & Commercial Flooring

Main Suppliers of quality carpets by Ulster, Brintons, Westex, Georgian, Mr Tomkinson, Kingsmead, Penthouse, Kersaint Cobb and many more
Solid Wood Engineered and Laminate Floors

Exclusive Stockists of
Adore Touch Luxury Vinyl Tiles
Huge Selection of Traditional and Modern Rugs
in all Shapes and Sizes

16 Station Road Settle BD24 9AA
email: mounseyfloors@tiscali.co.uk
www.andrewmounseyfloorcoverings.co.uk
Tel: 01729 823302

Bespoke Hand-Stitched Shoes Shoe Repairs

NELSON'S FOOTWEAR
SHOEMAKERS SINCE 1847

Proprietor: Daniel Nelson

01729 823523

36

20 Duke Street Settle BD24 9DN

WHOLESOME BEE

22

We stock organic foods, natural and organic
bodycare products, herbal remedies
and the highest grade supplements

enquiry@wholesomebee.co.uk

www.wholesomebee.co.uk

Telephone : 01729 825103

6 Duke Street, SETTLE, North Yorks, BD24 9DW.



45



PLANTS & COFFEE

AND MUCH MUCH MORE

LAY OF THE LAND
KINGS MILL LANE
SETTLE
NORTH YORKS
BD24 9BS

WWW.LAYOFTHELAND.CO.UK

01729 824247

Do You Love Cheese?

Come and visit Settle's specialist cheese emporium!

A unique range you won't find elsewhere:

- Hand made traditional cheeses
- Cheeses made on the farm
- Raw milk cheeses

Visit: The Courtyard Dairy at Crows Nest Barn,
A65 (between Settle and Austwick), LA2 8AS

01729 823 291

Open 7 days a week

Buy online:

thecourtyarddairy.co.uk



TOWN END

FARM SHOP

91



Visit Town End Farm Shop, artisan butchery, charcuterie and tearoom, in the heart of the Yorkshire Dales.

Enjoy stunning views of Malhamdale and Malham Cove from our cosy tearoom. Popular with cyclists, walkers and locals, our menu is classic Yorkshire Dales fayre.

All of our produce is fresh, local and full of flavour.



Our own farm butchery produces traditional sausages, cured meats and a range of charcuterie available to purchase in our farm shop, alongside game, fish, spirits, wine and beer, seasonal fruit and vegetables, preserves, confectionery, smoked products, cheese and much more.

WWW.TOWNENDFARMSHOP.CO.UK

Airton | Skipton | North Yorkshire | BD23 4BE | 01729 830902

Forage & Feast

DELI ▫ GIFTS ▫ TAKEAWAYS

Homemade Savouries

Sandwiches ▫ Fresh Salad Boxes

Curries ▫ Samosa ▫ Pakora ▫ Bhaji's

Cakes ▫ Treats ▫ Sweets

Finger Lickin' Fudge

Great Coffee

21

Ask about our Catering Service for Small Groups

9 Duke Street Settle BD24 9DU
07432 736705

EXPLORE • DISCOVER • ENJOY

PLACES TO EAT & SLEEP

“The Settle area has a history of providing hospitality to travellers and visitors since the 1750’s when it was an important town on the Keighley to Kendal Turnpike”

A number of coaching inns still survive from the days of the turnpike and continue the tradition of providing comfortable rooms, tasty food and a wide variety of drinks (although they no longer have facilities for stabling your horse!).

There is also a great selection of restaurants, cafés, coffee houses, tearooms and take-aways that cater for all tastes and budgets.

When it comes to selecting a place to stay, you are spoilt for choice and sure to find something that perfectly matches your requirements.

If it’s the lap of luxury you are looking for then look no further than the award-winning Traddock Country House Hotel in Austwick.

If your preference is for a cosy, traditional Inn where you can sample local ales and delicious wholesome food before retiring to your bed, you can make your selection from some fine examples such as The Golden Lion, The Talbot Arms, The Craven Arms and The Black Horse at Giggleswick.

For brilliant, homely service, nothing can beat the choice of stylish guest houses and welcoming bed & breakfasts.

If self-catering is your preferred option then there is a fantastic choice of delightful holiday cottages and holiday homes in Settle and the surrounding villages.

Pitches are available for Touring Caravans and Tents at a number of award-winning Holiday Parks within a short distance of Settle.

These parks are especially attractive for families with on-site dining, games rooms and play areas.

This Guide showcases some of the best places to eat and sleep in the Settle area. Further details can be found at

www.visitsettle.co.uk

THE WONKY CAKE CAFÉ

SERVING LIGHT LUNCHES, DAILY SPECIALS
AND HOMEMADE CAKES

PLEASED TO CATER FOR SPECIAL
OCCASION PARTIES AND GET TOGETHERS

4 Bishopdale Court
Settle BD24 9EB
Tel: 07495 182746



Elaine's Tea Rooms ‘a hidden gem’

Enjoy a delicious home cooked meal
followed by a choice of scrumptious
homemade puddings or cakes
in a beautiful countryside location
on the Pennine Bridleway

Fully Licenced

Open 7 days 9.00am - 4.30pm Sunday booking advisable

01729 824114 e.knowles00@btinternet.com

FEIZOR nr SETTLE LA2 8DF



Bakery Shop | Café | Sandwich Bar

Ye Olde Naked Man Café is a family run business located in the heart of Settle. Specialising in homemade and seasonal produce. Open every day.

01729 823 230

Market Place, Settle, BD24 9ED

3



3



THE SINGING KETTLE

Family-run Café & Takeaway

Open 9-5pm 7 days a week

Breakfasts • Daily Specials • Sunday Dinners

5* Food Hygiene Rating • Dog Friendly

Bookings taken for anytime of the evening

17 MARKET PLACE SETTLE 01729 823125

THE FOLLY COFFEE HOUSE

Enjoy the best of local produce in our atmospheric 17th century kitchen.

www.thefolly.org.uk
01729 825185

40



Museum Café of the Year

**MUSEUMS
+ HERITAGE
AWARDS**

**SHORTLISTED
2023**

REGISTERED CHARITY NO. 505438



18

We serve
outrageously good
coffee



Plus
breakfasts, cakes, paninis,
sandwiches and more



Pop in for a
Ray of Sunshine
whatever the weather

Bumble Bee
coffee shop



6 High Street, Settle, BD24 9EX

The Fisherman

Fish & Chip Shop

Restaurant and Take Away

Open 7 days a week

11:30am to 9pm approx.

01729 823297

16 Church Street Settle BD24 9JE



7

Milano Pizzas

TAKEAWAY

PIZZAS | KEBABS | BURGERS | FRIED CHICKEN

Open 7 days a week

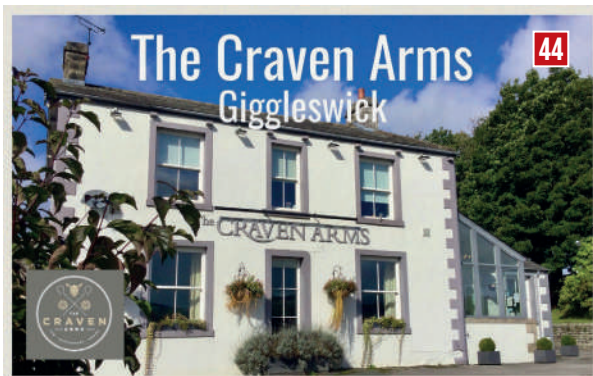
Mon - Sun : 4.00pm - 10.00pm

Fri & Sat : 4.00pm - 11.00pm

01729 824411

6 Church Street SETTLE BD24 9JE

7



A family friendly free-house with great food, real ales & eight cosy en-suite bedrooms.

Dine in our spacious restaurant or cosy bar & enjoy locally sourced food from traditional British to more contemporary dishes & always with excellent service.

The Craven Arms Brackenber Lane Giggleswick BD240EA
01729 825627 www.craven-arms.co.uk



THE GOLDEN LION

Our menus change with the seasons, we offer a huge range of dining options, award-winning Thwaites Ales and a large selection of wines and spirits.

Open early 'til late and always with a warm Yorkshire welcome.



THE BLACK HORSE INN

A family-run, traditional Yorkshire Pub in a beautiful 1663 building in the heart of Giggleswick

Old Fashioned Bar and Snug with a Modern Twist

Charming Restaurant - Full of Character

Picturesque, Sun-trapped Patio with Lovely Views

Family and Dog Friendly • Accommodation • Baby Changing Facilities

32 Church Street Giggleswick BD24 0BE
01729 821303 hello@blackhorsegiggleswick.co.uk

Duke Street, Settle,
North Yorkshire, BD24 9DU
01729 822203
thelionsettle.co.uk



TALBOT ARMS

6 CASK ALES
BEER GARDEN
FOOD SERVED 12-8

01729 823924 www.talbotsettle.co.uk



ROSA & MATTEO'S

ITALIAN RESTAURANT • SETTLE

A small and friendly restaurant
in the heart of Settle
serving delicious Italian Cuisine



Eat-in or Takeaway
All Dietary Requirements Catered For
Dogs Welcome

01729 824929

www.settleitalian.co.uk

The Shambles Market Place Settle BD24 9EH



Surrounded by the breathtaking scenery of the Yorkshire Dales National Park, here at The Traddock Hotel we offer peace and quiet, invigorating adventure or merely the chance to relax and explore our charming villages and their traditional way of life.



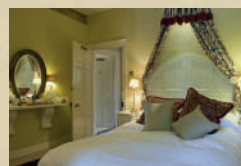
- Open daily for lunch 12.00 - 3.00pm dinner 6.30 - 9.00pm with light snacks and refreshments available all day.



- We have facilities for private dining, and welcome bookings for birthdays, events and private parties.



Our award winning restaurant offers first class food using the best locally sourced ingredients with simple flair, clean flavours, and a touch of imagination.

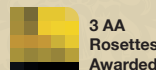


We pride ourselves on our warm welcoming hospitality and professional but unpretentious service.

The Traddock
Austwick,
Near Settle, LA2 8BY,
Yorkshire Dales National Park.

Telephone 015242 51224
Facsimile 015242 51796

www.thetraddock.co.uk
info@thetraddock.co.uk



AA
Breakfast
Award

THE KNIGHTS TABLE

75

Food fit for a King

If you are in the Settle area and looking for a bite to eat, look no further than The Knights Table at Stainforth.



Serving a great selection of main meals, light bites, salads and sandwiches as well as a fully stocked bar, we also offer a take-away menu. Our food is locally sourced whenever possible and we pride ourselves on portions fit for a King!



The Knights Table is part of the Knight Stainforth Hall Estate, a manor house dating back to pre-Norman times, which belonged to the Knights Templar. Located 2 miles north of Settle, nestled on the banks of the River Ribble with breathtaking views of the Ribble Valley, easily accessible for walkers or cyclists being adjacent to the 'Ribbleway' 'Pennine Bridleway' and 'The Way of The Roses'.



Other facilities include a four star, award winning Caravan & Campsite and a Holiday Cottage with three bedrooms.




Knight Stainforth Hall

Little Stainforth, Settle
North Yorkshire BD24 0DP
T: 01729 822200
www.knightstainforth.co.uk




 Follow us on Facebook to receive info on special offers and promotional discounts available.

Gallaber Park

A Place to be



96

Book your Holiday today



Gallaber Park, Long Preston

Gallaber Park provides an idyllic retreat for escaping the rigours of modern life. It truly is a beautiful place to be and the most premier of holiday parks near Settle, in this stunningly natural, unspoilt part of the world.

Scan here to request your FREE Buyers Guide



THORNLEYLEISURE.CO.UK



LANGCLIFFE PARK



80

Peaceful secluded park 1 mile from Settle town centre.
Ideal base for walking. Touring Caravans & motorhomes. Holiday Homes available to buy. Holiday Apartment to hire. Online booking available.





Tel: 01729 822387

www.langcliffe.com



Beautiful surroundings ideal for walkers, cyclists and countryside lovers.



93

PEAKS AND PODS

Luxury glamping pods on the edge of the Yorkshire Dales

peaksandpods.co.uk



Boustagill Farm, Rathmell, Settle

54

17

King William the fourth Guest House

Providing high quality Bed & Breakfast accommodation in the centre of the beautiful North Yorkshire town of Settle.

4 Double, 1 Twin, 1 Single Room - All Ensuite and include Breakfast
One of the Double's is on the Ground Floor (Wheelchair Accessible) also Pet Friendly
Competitive rates and Discounts for longer stays.
Check availability & Book Direct
www.kingwilliamthefourthguesthouse.co.uk

King William the Fourth Guest House, High Street, Settle. BD24 9EX
tel: 01729 268152 email: kingwilliamsettle@gmail.com

Guest Parking • Secure Cycle Storage • Short walk from Train Station • Shops & Restaurants close by

Tipperthwaite Barn Holiday Cottages Giggleswick



Sleeps 4 + Sleeps 2

Peaceful Rural Location with Stunning Views

Secure Cycle Storage

Pub within Walking Distance

www.tipperthwaitebarn.co.uk

07932 726341 ruth@tipperthwaitebarn.co.uk

83

55



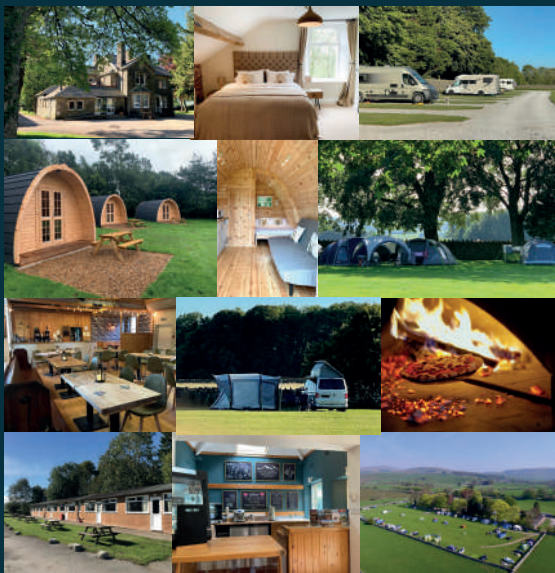
THE DALESBRIDGE

CAMPSITE & TOURING . PODS
BUNKHOUSE CABINS
LUXURY SELF CATERING LODGE
BAR . ONSITE SHOP. PIZZA OVEN



As seen on Channel 4's
The perfect Pitch

Channel 5's Motor homing
with Merton and Webster



Located just off the A65 nr Austwick, The Dalesbridge is spread over 10 acres of beautiful countryside. Offering a wide variety of accommodation options from camping and touring (with hardstanding, EHU & Grass pitches), Pods, Bunkhouse cabins to a luxury lodge sleeping 16. A cosy onsite bar serving wood fired pizzas, shop with fresh barista coffee, and flexible conference rooms The Dalesbridge is the perfect base.

INFO@DALESBRIDGE.CO.UK
015242 51021
WWW.DALESBRIDGE.CO.UK
AUSTWICK NR SETTLE LA2 8AZ

Be Settled in Settle

A collective of like-minded organisations
which is committed to making the
Settle area as welcoming and
accessible as possible for
residents and visitors living with
dementia, hidden and visible disabilities.

We aim to be
**WELCOMING, INFORMED, SAFE,
ACCESSIBLE & UNDERSTANDING**

For more information on the work we are doing, please call

01729 824868 www.theplaceinsettle.org.uk

The Place, 11 Commercial Yard, Duke Street, Settle, BD24 9RH



Churches Together in Settle and District



*Services, Meetings, Events
Socials and Celebrations*

**Visitors will receive a very warm welcome
at the many churches in Settle and District**

Anglican Churches

Settle • Giggleswick • Langcliffe • Stainforth • Long Preston
Horton in Ribblesdale • Hellifield • Rathmell

Methodist Churches

Settle • Hellifield

Catholic Church • Settle

Society of Friends (Quakers) • Settle

Christian Fellowship • Settle

Visit our website for details about each church

www.ctisad.org.uk

P

PARKING AND PUBLIC TOILETS

P

SETTLE

There are three 'pay & display' car parks within a short walking distance of the town centre

Ashfield	BD24 9AA
Whitefrairs	BD24 9JD
Greenfoot	BD24 9RB

Public Toilets

Public Toilets are available in Whitefriars Car Park

Motor Homes

Motorhomes can be parked overnight (max.3 nights) in Greenfoot Carpark

Coaches

FREE coach parking is available in Whitefriars Car Park

Electric Vehicle Charging Bays

Three fast electric vehicle charging bays are available in Ashfield Car Park.

THE VILLAGES

There are four 'pay & display' car parks located in villages in the Settle Area

Stainforth	BD24 9QD
Horton in Ribblesdale	BD23 0HD
Clapham	LA2 8EG
Malham	BD23 4DA

Public Toilets

All these car parks have public toilets, including a toilet with RADAR facilities, which are open 24 hours a day.

Motor Homes

Overnight occupation of Motor Homes is prohibited in these car parks

MORE INFORMATION

www.visitsettle.co.uk/parking-public-toilets-in-settle-area

SETTLE Tourist Information Centre



Come and visit

Settle Tourist Information Centre on the Market Place. Our aim is to help you make the most of your visit to Settle and the surrounding Yorkshire Dales.

Visit us for:

- Information on what to see and do in the area
- A well-stocked gift shop with locally produced arts and crafts
- Maps, trail guides and books
- Accommodation information and bookings



See - www.visitsettle.co.uk - for opening times

Settle Tourist Information Centre

Town Hall, Cheapside, Settle, BD24 9EJ

Tel: 01729 825192

Email: settle@ytbtic.co.uk Web: www.cravendc.gov.uk/tourism

12

CREDITS

Designed by **Vibrant Settle Community Partnership** in conjunction with **iprint of Settle**.

All images used in this publication retain copyright and have been kindly donated free of charge.

The image owners are acknowledged below :-

Cover – View from Castleberg, The Folly (Lazy B, Flickr), Settle Station Lamp (Oxfordshire Churches, Flickr), Settle Market, Scaleber Force (Car 67, Flickr), Dales Sheep, Pen-y-ghent (Three Peaks Gallery, Settle), Mountain Biking (Castleberg Outdoors, Settle), Climbing on Castleberg (Craven Herald), Ingleborough Caves, Gaping Gill & Nature Trail (Ingleborough Caves), Ribblesdale (J Cooper-Smith).

Attmire Scar, Norber Erratics, Winskill Stones, Oxenber & Wharfe Woods (Mark Corner)

All other photography by Tony & Carol Dilger.

Many thanks to the local businesses and organisations that have supported the publication of this guide and are proud to be part of this fantastic showcase for the Settle Area.

Settle Guide 2023

design & print by **i print**

HOW TO FIND US

Sat Nav : BD24 9EJ



LET THE TRAIN TAKE THE STRAIN

Regular Train Service to Settle on **Leeds - Settle - Carlisle Line**
Leeds - Giggleswick - Lancaster - Morecambe Line

Note: Leeds - Lancaster - Morecambe Line
stops at Giggleswick Station which is 1 1/4 mile from Settle Market Place

LET THE BUS SAVE THE FUSS

Bus Services connect Settle with Skipton, Leeds, Harrogate, Clitheroe, Horton-in-Ribblesdale, Malham, Clapham, Ribbleshead, Ingleton, Kirkby Lonsdale

Timetables from www.dalesbus.org

ARRIVING BY ROAD

Settle is situated just off the A65, midway between Leeds and Kendal and is readily accessible from A1, M1, M6 & M65

MORE INFORMATION

www.visitsettle.co.uk

Everything you need to know
to plan your special staycation,
short break or day trip to the
wonderful Settle Area

 facebook.com/visitsettle

Up-to-the-minute information on
what's happening in the Settle Area